

# ■ ■ ■ Emerald's P6-Excel Loader®

Load large or complex data sets into P6 with ease. No manual data entry required.

## INNOVATIVE PRODUCTIVITY TOOLS

The P6-Excel Loader® is one of many exclusive add-on tools offered by Emerald that increase efficiency, flexibility and accuracy in conjunction with Primavera tools.

Emerald add-ons for P6 include:

- **CAPPS** (Capital Project Progressing System)
- **TAPS** (Turnaround Progressing System)
- **EP-dashboard and EP-datawarehouse** Enterprise Reporting Tools.

Emerald also offers add-ons and a loader solution for Primavera Contract Management.

## THE CHALLENGE

Oracle|Primavera P6® is a state of the art Enterprise Project Portfolio Management System designed to allow worldwide project teams to collaborate for the best project results. Prioritizing, planning, managing and evaluating projects, programs and portfolios of any size is made easy with P6. Giving the team access to load all of the necessary data into the system may not always be possible and even when it is, the data entry can be made more efficient, less frustrating and less expensive to deal with.

## THE SOLUTION

The Emerald P6-Excel Loader® is a flexible and secure solution to automate data entry processes and load project data and dictionaries from Excel into Primavera P6 in a controlled manner. The solution can create and update data in the Primavera database, going above and beyond P6's built-in excel import functionality and even the XER process.

Projects									
Project ID	Project Name	Project Status	Responsible Manager	Data Date	Project Planned Start	Must Finish By	Total Activities		
ACME	ACME Corporation	Active	ACME	09-Oct-12			9		
Construction	Construction Projects	Active	VP of Construction	09-Oct-12			9		
Caprini Corp	Caprini Corporation	Active	Andy Mason	09-Oct-12			9		
APEX	Apex Inc.	Active	Andy Mason	09-Oct-12			9		
ABC-123	New Building Construction	Active	VP of Construction	21-Sep-14	21-Sep-14	06-Jun-15	9		
ABC-200	Expand Grace Hospital	Active	VP of Construction	01-Nov-14	01-Nov-14	09-Jul-15	0		
Philadelphia	City of Philadelphia	Active	Andy Mason	09-Oct-12			0		
PHE-230	Franklin School Renovation	Active	Andy Mason	15-Oct-14	15-Oct-14	12-Dec-14	0		
PHE-231	Hero School Renovation	Active	Andy Mason	15-Oct-14	15-Oct-14	12-Dec-14	0		
PHE-232	Westend School Renovation	Active	Andy Mason	15-Oct-14	15-Oct-14	12-Dec-14	0		
PHE-233	Arthur School Renovation	Active	Andy Mason	15-Oct-14	15-Oct-14	12-Dec-14	0		
Hawthorne Ind.	Hawthorne Industries	Active	VP of Construction	1-Nov-14	1-Nov-14	9-Jul-15	0		
HAW-343	Packaging Plant Upgrade	Active	VP of Construction	30-Sep-14	30-Sep-14	2/1/2015	0		
HAW-344	Refinery Expansion	Active	VP of Construction	30-Sep-14	30-Sep-14	2/1/2015	0		
PEP	Power, Energy and Process	Active	VP of Construction	30-Sep-14	30-Sep-14	2/1/2015	0		
Plant Refit Engr	Plant Refit Engineering	Active	VP of Construction	30-Sep-14	30-Sep-14	2/1/2015	0		
Plant Refit Const	Plant Refit Construction	Active	VP of Construction	30-Sep-14	30-Sep-14	2/1/2015	0		
State DOT	State DOT	Active	VP of Construction	30-Sep-14	30-Sep-14	2/1/2015	0		
Highway	Highway	Active	VP of Construction	30-Sep-14	30-Sep-14	2/1/2015	0		
Highway Const	Highway Const	Active	VP of Construction	30-Sep-14	30-Sep-14	2/1/2015	0		
Project Reviews	Project Reviews	Active	VP of Construction	30-Sep-14	30-Sep-14	2/1/2015	0		
Pennsylvania	Pennsylvania	Active	VP of Construction	30-Sep-14	30-Sep-14	2/1/2015	0		
Pittsburgh	Pittsburgh	Active	VP of Construction	30-Sep-14	30-Sep-14	2/1/2015	0		
Reading	Reading	Active	VP of Construction	30-Sep-14	30-Sep-14	2/1/2015	0		

1	A	B	C	D	E	F	G	H
1	Project							
2	Id	Name	ObsId	ParentEPSId	DataDate	PlannedStart	MustFinishBy	Status
3	ABC-123	New Building Construction	VP of Construction	APEX	21-Sep-14	21-Sep-14	6-Jun-15	Active
4	ABC-200	Expand Grace Hospital	VP of Construction	APEX	1-Nov-14	1-Nov-14	9-Jul-15	Active
5	PHE-230	Franklin School Renovation	Andy Mason	Philadelphia	15-Oct-14	15-Oct-14	12-Dec-14	Active
6	PHE-231	Hero School Renovation	Andy Mason	Philadelphia	15-Oct-14	15-Oct-14	12-Dec-14	Active
7	PHE-232	Westend School Renovation	Andy Mason	Philadelphia	15-Oct-14	15-Oct-14	12-Dec-14	Active
8	PHE-233	Arthur School Renovation	Andy Mason	Philadelphia	15-Oct-14	15-Oct-14	12-Dec-14	Active
9	HAW-343	Packaging Plant Upgrade	VP of Construction	Hawthorne Ind	1-Nov-14	1-Nov-14	9-Jul-15	Active
10	HAW-344	Refinery Expansion	VP of Construction	Hawthorne Ind	30-Sep-14	30-Sep-14	2/1/2015	Active

The P6-Excel Loader® saves you time by enabling data entry directly into MS-Excel® or automating data transfers from other project systems into P6. If you are transitioning from MS-Project® or MS-Excel® based scheduling, to P6 based scheduling, or trying to clean up your old global dictionaries, the P6-Excel Loader® is the solution for you.

Activities									
Activity ID	Activity Name	Original Duration	Remaining Duration	Start	Finish	Activity % Complete	Actual Labor Units		
ABC-123	New Building Construction	10.00d	0.00d	22-Sep-14 A	06-Nov-14	100%	110.00h		
Design and Engineering		10.00d	0.00d	22-Sep-14 A	06-Oct-14 A	40.00h			
A1000	Kickoff	10.00d	0.00d	22-Sep-14 A	06-Oct-14 A	100%	40.00h		
A1010	Design and Engineering	5.00d	1.00d	09-Oct-14 A	15-Oct-14	80%	60.00h		
Procurement		10.00d	7.00d	10-Oct-14 A	24-Oct-14	30%	10.00h		
A1030	Foundation Construction	15.00d	15.00d	16-Oct-14	05-Nov-14	0%	0.00h		
A1040	Structural	15.00d	15.00d	16-Oct-14	05-Nov-14	0%	0.00h		
Rough-In		15.00d	15.00d	16-Oct-14	05-Nov-14	0%	0.00h		
A1050	Rough-In	15.00d	15.00d	16-Oct-14	05-Nov-14	0%	0.00h		
Close-In		15.00d	15.00d	16-Oct-14	05-Nov-14	0%	0.00h		
A1060	Close-In	15.00d	15.00d	16-Oct-14	05-Nov-14	0%	0.00h		
Finishes and Closeout		15.00d	15.00d	16-Oct-14	05-Nov-14	0%	0.00h		
A1070	Finishes and Closeout	15.00d	15.00d	16-Oct-14	05-Nov-14	0%	0.00h		
A1080	Completion	15.00d	15.00d	16-Oct-14	05-Nov-14	0%	0.00h		

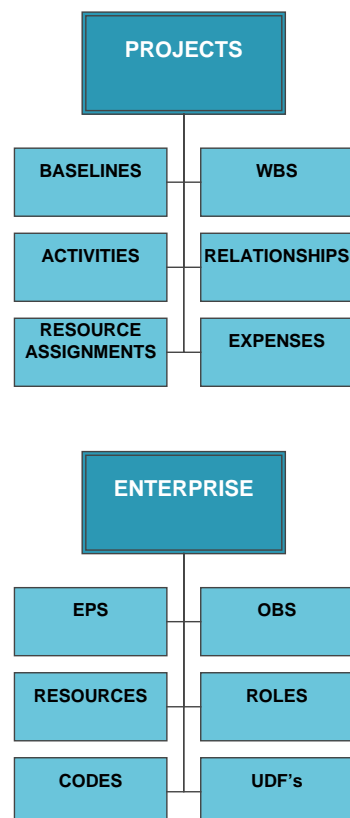
  

1	A	B	C	D	E	F	G
1	Id	Name	Status	ActualStart	ActualFinish	ActualLabor	RemainingDur
2	A1000	Kickoff	Completed	9/22/2014		0	0
3	A1010	Design and Engineering	Completed	9/22/2014	10/6/2014	40	0
4	A1020	Procurement	In Progress	10/9/2014		60	0
5	A1030	Foundation Construction	In Progress	10/10/2014		10	56
6	A1040	Structural					
7	A1050	Rough-In					
8	A1060	Close-In					
9	A1070	Finishes and Closeout					
10	A1080	Completion					



## P6-EXCEL LOADER®

Use Emerald's P6-Excel Loader® to load data into virtually all data elements in P6.



## THE BENEFIT

There is a definite need for efficiency in data uploading processes related to the transfer of global and project related data into P6. Emerald's P6-Excel Loader®, developed by our team of add-on tools specialists, can significantly accelerate P6 implementations, monthly statusing from multiple P6 systems, clean-up efforts and project updates. The user friendly nature of the P6-Excel Loader® solution means that it can be used by any user without requiring database administrator knowledge or security privileges.

## PRODUCT HIGHLIGHTS

### User friendly

- Web or client based
- Update baselines without restoring those baselines into projects

### Saves Time

- Load into all of the data dictionaries within P6 (EPS, OBS, Resources, Roles, Activity Codes, Project Codes, Resource Codes, Cost Accounts, etc) and create User Defined Fields and missing code/dictionary values
- Streamline project updates from contractors without giving access to P6 using a more robust approval process than Reflection allows

### Saves Money

- Load information into P6 from another system without building a dedicated integration program (expenses, timesheet hours, etc.)
- Allows third-party users to import data from Excel without making them Project Superusers in P6
- Works through P6 API so P6 security is respected and data is always supported by Oracle

## TECHNICAL SPECS

- Client: IE / Firefox / Chrome
- Application Server: Tomcat or Weblogic
- Java Runtime Environment: JRE 6
- Primavera API Compatible Database (EPPM)