



*Do you need to develop your own resource, expense or activity level calculations and formulas to track and manage KPIs?*

# P6-Calculator v6 – Automate Your P6 Calculations

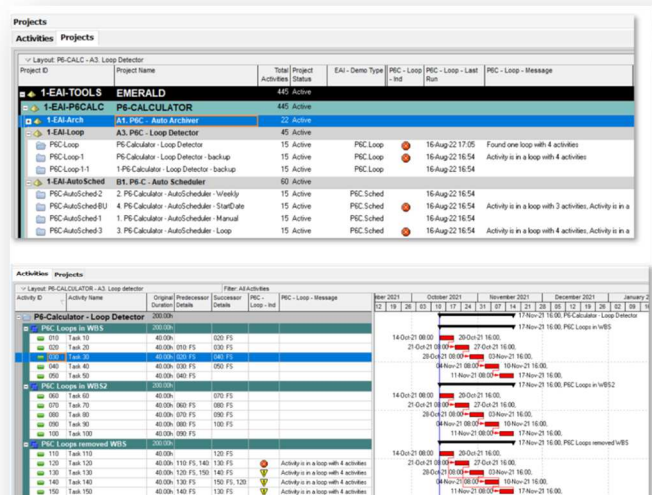
## THE CHALLENGE

Project management has always been a difficult beast to conquer. With as many moving parts as there are technologies to manage them, it can be almost impossible to keep track of everything. Getting a project successfully off the ground and keeping it maintained afterwards requires a vast network of employees, all of whom need to be in constant communication with one another, and oftentimes that just isn't the case. With field and office data coming in from different people, at different times, to different locations, it becomes incredibly difficult for management to put together an up-to-date project portfolio report with any degree of accuracy or consistency. So people end up with different information, each with only a part of the big picture, and confusion runs rampant.

Oracle provides a partial solution to this scenario with Primavera P6. Using Project Scheduled Services, companies can schedule and summarize multiple projects automatically, saving both manpower and the typical inconsistency that comes with many different contributors. Project Scheduled Services can be used to run P6 scheduling nightly, weekly, or monthly depending on the needs of the company, but while it ensures more consistency and predictability, it does not allow users full control over their P6 data in a consistent and repeatable manner. P6 also falls short in providing the flexibility needed to work in an integrated environment. This can cause all sorts of problems, such as varied timing between schedule runs, causing important data to be missed and reports to fall short of the desired accuracy.

## THE SOLUTION

Emerald's P6-Calculator not only perfects Oracle's Primavera solution but also brings additional functionality to the table. With multiple innovative utilities, P6-Calculator will bring you optimized project management like you've never seen before. Let's take a look at some of these utilities:



CONTACT US

hq 403.686.7100

toll free 1.877.316.6005

emerald@emerald-associates.com

www.emerald-associates.com

■ P6-Calculator® is a registered trademark of Emerald Associates

© Emerald Associates Inc. All rights reserved.  
Other names may be trademarks of their respective owners.

- **Primavera P6 Project Auto Scheduling Utility** for automation of the scheduling function across a portfolio of projects
- **Primavera P6 Project Code Rollup Utility** for rolling up data to give the status of a project code based on activities in the underlying projects
- **Primavera P6 Calendar Generator Utility** for the dynamic creation of activity calendars that reflect limited site, crew, and equipment access
- **Primavera P6 Formula Calculator Utility** for developing your own resource, expense, or activity level calculations and formulas that track and manage corporate Key Performance Indicators that go beyond the standard project-based datasets within P6
- **Primavera P6 Resource User-Defined Rollup** for rolling up user-defined fields from Resource Assignments or Expenses to Tasks/Activities and Projects

## THE BENEFITS

P6-Calculator offers an incredible range of benefits through its different utilities. Starting with the very basic ability to address the most common problems with simple solutions, P6-Calculator has nowhere to go but up. Take full control over your P6 auto-scheduling process and enjoy the resulting consistency and accuracy of your project reports. From streamlining your program management system to modelling complex workforce availability windows with instantly generated P6 calendars, P6-Calculator will not only increase productivity and reduce costs but also deliver real, competitive advantage to any and all of its clients.

### USER FRIENDLY & FLEXIBLE

- Simplify and enhance Primavera to fit your company's specific needs
- Consistent P6 data date
- Budget and management reporting made easy
- Automate the capture of deeper levels of P6 data for improved reporting

### SAVES TIME

- Improved updating and timely reporting
- Streamline project management
- Develop your own formulas to track KPIs specifically to your needs

### SECURE

- Ensure safe work sites without losing time
- Take full control over your P6 data directly in P6 or through configurations

---

### WHAT'S NEW – V6

- Code remapping – lets you remap project codes into global codes or UDFs
  - Approval mode – once a change is approved, values are copied from UDFs into concrete fields
  - UDF rollup and rolldown
  - Calendar generator
  - P6 leveling priority
  - Auto-scheduler – schedule the project automatically on a regular basis
  - Auto-counter – count the number of objects in a project based on a UDF value (ex: work orders)
  - Forecast – calculate the forecast of a project
  - Resource rollup – list the resources used in a project at the project level
  - Loops check – check the projects for loops and flag problems at the project level
  - Archiving – archive activities and WBS nodes based on custom criteria defined by the user
  - Assignment copy – copy codes and UDFs from a parent project to a child project
- 

### TECHNICAL SPECS

- 1 GB of RAM
  - 500 MB of disk space
  - Windows 2003 or newer or Linux
-