

Know how your projects are progressing with convenient, easy to understand reporting.

P6-Reporter P6-Reporter v3 – Easy P6 Reporting

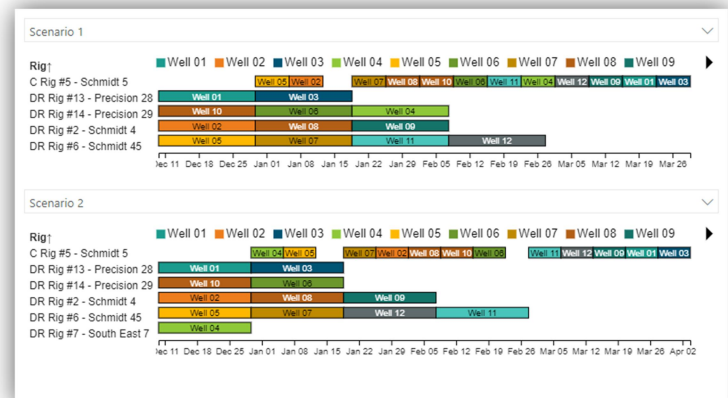
THE CHALLENGE

To be successful in our fast-paced economy, companies need to leverage their information assets for effective decision making to maximize performance. Establishing timely, accurate and targeted enterprise datasets with relevant Key Performance Indicators (KPIs) is a difficult task when corporate information is scattered across different systems and are needed by stakeholders and vendors from around the world.

As users of Oracle Primavera P6, many corporations find it difficult to fully capitalize on their project based data. With the data in P6 constantly changing with each update to the schedule, gaining access to project timelines and deliverable commitments, resource and role data on skillsets availability, and usage, expense and cost related information for true period-based performance analysis from within P6 can be a major challenge. P6 users lack a simple project snapshotting method that keeps a historical record of project changes that includes period based forecasting and actuals and is easy-to-use. Taking and merging exports in XER, XML or Excel or taking copies within P6 are all options creative P6 users try that are riddled with more potential issues of their own. Working with the out-of-the-box publishing is complex and reading data directly from P6 tables is also a steep learning curve, not allowed by many IT departments and not recommended for security reasons.

THE SOLUTION

Emerald Associates built P6-Reporter (formerly EP-dashboard and EP-datawarehouse) to fill the gap in enterprise reporting technology within P6 and bring P6 data to the greater project or corporate team. P6-Reporter is built on top of EP-datawarehouse - a flexible, standalone, enterprise reporting database that uses automated or user pushed snapshots of P6 project data into a denormalized database that is much easier to work with. All levels you define, such as projects, activities, logic, steps, resources, resource assignments and expense actuals, can be captured along with key global data making corporate reporting much more consistent and quicker to develop. Time period based data at the activity, resource and expense levels are needed for true



Emerald
ASSOCIATES

CONTACT US

hq 403.686.7100

toll free 1.877.316.6005

emerald@emerald-associates.com

www.emerald-associates.com

© Emerald Associates Inc. All rights reserved.
Other names may be trademarks of their respective owners.

earned value analysis, and P6-Reporter makes reporting on these and other project elements much easier than learning hundreds of P6 tables. With P6-Reporter snapshots, P6 users no longer need to capture as many baselines and project copies to have historical data for monthly, weekly or daily comparisons available in one place.

P6-Reporter also comes with pre-existing, templated data extracting procedures or queries to make building reports and dashboards in your company's current reporting tool much quicker. Power BI, Tableau, BusinessObjects, Oracle Analytics, SAP Analytics, etc. can all be plugged in with P6 data with P6-Reporter within hours. For example, clients can easily chart project portfolio statuses and project rollups, WBS level data, planned versus actuals time based resource, role, or crew performance data, or cost to date data with delta plots showing the difference between this month's and last month's project forecasts.

THE BENEFITS

- Develop reports and graphs that are unavailable in P6
- Develop reports and graphs quickly and easily in current corporate reporting system
- Easily combine P6 data with data from other systems
- Report on planned and actual spreads, including expenses, more accurately than P6
- Reduce effort and cycle time for reporting making more regular updates possible
- Avoid exporting XERs, XMLs or Excel data and manual, error prone processes
- Avoid excess data and traffic on crucial operational systems
- Keep historical information for change comparison on multiple update periods
- Purge or archive old data easily

USER-FRIENDLY AND FLEXIBLE

- Configure the fields to capture and automate your snapshots using an intuitive UI
- Easily push user snapshots from within P6
- Uses P6 API so only authorized users can take snapshots

USER COMMENTS

"Management visibility to TA progress in such a simple and intuitive way."

Lead Scheduler, Suncor Energy

WHAT'S NEW – V3

- Faster extraction performance
- Storing simplified current extractions as well as full snapshot extractions
- New charts and queries for resource allocation
- Additional Gantt charts for near critical monitoring
- Milestone trending
- Green-ups are now expandable
- Cost account charts
- P6-QA charts and trending
- More comparison graphs and trending!

TECHNICAL SPECS (ON-PREMISE)

- Windows or Linux OS released in the past 10 years
 - Oracle Database 10.2.0.2 or higher or Microsoft SQL Server 2005 or higher
 - Minimum 4 GB RAM (amount required dependent on project size and number of parallel processors)
 - 500 MB free disk space
 - Works with any modern desktop browser such as Edge, Chrome, Brave, or Safari
-