

The Oracle logo, consisting of the word "ORACLE" in a bold, red, sans-serif font. A registered trademark symbol (®) is located at the top right of the letter "E".

ORACLE®

PRIMAVERA

New Features in Primavera Portfolio Management 15.1

COPYRIGHT & TRADEMARKS

Copyright © 2015, Oracle and/or its affiliates. All rights reserved.

Oracle is a registered trademark of Oracle Corporation and/or its affiliates. Other names may be trademarks of their respective owners.

This software and related documentation are provided under a license agreement containing restrictions on use and disclosure and are protected by intellectual property laws. Except as expressly permitted in your license agreement or allowed by law, you may not use, copy, reproduce, translate, broadcast, modify, license, transmit, distribute, exhibit, perform, publish or display any part, in any form, or by any means. Reverse engineering, disassembly, or decompilation of this software, unless required by law for interoperability, is prohibited.

The information contained herein is subject to change without notice and is not warranted to be error-free. If you find any errors, please report them to us in writing.

If this software or related documentation is delivered to the U.S. Government or anyone licensing it on behalf of the U.S. Government, the following notice is applicable:

U.S. GOVERNMENT RIGHTS

Programs, software, databases, and related documentation and technical data delivered to U.S. Government customers are “commercial computer software” or “commercial technical data” pursuant to the applicable Federal Acquisition Regulation and agency-specific supplemental regulations. As such, the use, duplication, disclosure, modification, and adaptation shall be subject to the restrictions and license terms set forth in the applicable Government contract, and, to the extent applicable by the terms of the Government contract, the additional rights set forth in FAR 52.227-19, Commercial Computer Software License (December 2007). Oracle USA, Inc., 500 Oracle Parkway, Redwood City, CA 94065.

This software is developed for general use in a variety of information management applications. It is not developed or intended for use in any inherently dangerous applications, including applications which may create a risk of personal injury. If you use this software in dangerous applications, then you shall be responsible to take all appropriate fail-safe, backup, redundancy and other measures to ensure the safe use of this software. Oracle Corporation and its affiliates disclaim any liability for any damages caused by use of this software in dangerous applications.

This software and documentation may provide access to or information on content, products and services from third parties. Oracle Corporation and its affiliates are not responsible for and expressly disclaim all warranties of any kind with respect to third party content, products and services. Oracle Corporation and its affiliates will not be responsible for any loss, costs, or damages incurred due to your access to or use of third party content, products or services.

NOTE: Duplication or distribution of this document without written permission from Oracle Corp. is prohibited.

CONTENTS

- New Features in Primavera Portfolio Management 15.11**
 - Dashboards2
 - Additional Graph Types3
 - Global Color Templates4
 - Usability5
 - Advanced Search Enhancements6
 - Exporting a Scorecard as a Word Document7
 - Function Engine Status on the Home Screen8
 - Additional Usability Enhancements.....9
 - Additional Enhancements.....10

New Features in Primavera Portfolio Management 15.1

Key enhancements include:

- New graph types added to dashboards
- Global color templates
- Advanced Search
- Scorecard export as a Word document
- Function Engine status on the home screen
- Auto-renaming of duplicate items
- Automated item publication
- Workflow enhancements
- Advanced Function Editor enhancements
- Integration enhancements



Dashboards

New dashboards functionality in Primavera Portfolio Management 15.1 includes:

- Additional graph types
- Color templates

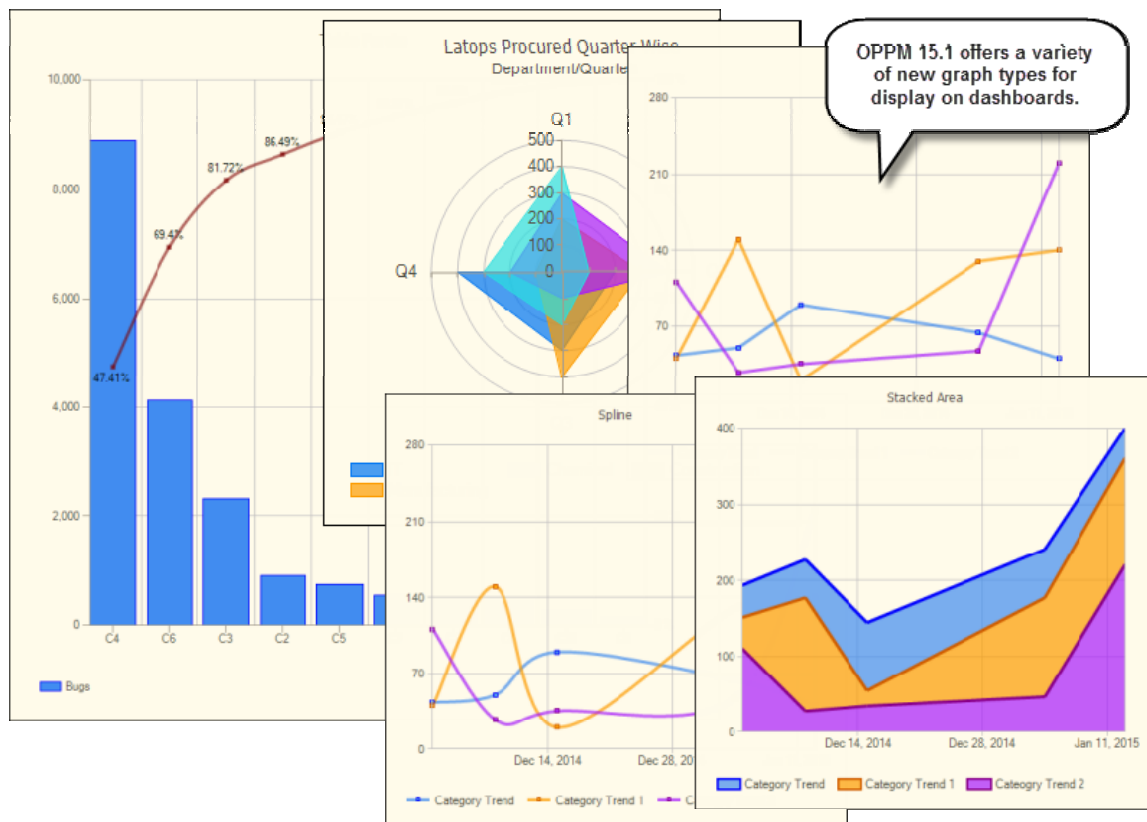
Additional Graph Types

Primavera Portfolio Management 15.1 includes new graph types -- radar/spider chart and Pareto chart -- for display on dashboards, providing decision makers with new ways to view portfolio data.

The following types of trend graphs have also been added:

- spline
- step line
- area
- spline area
- stacked area
- 100% stacked area
- fast line

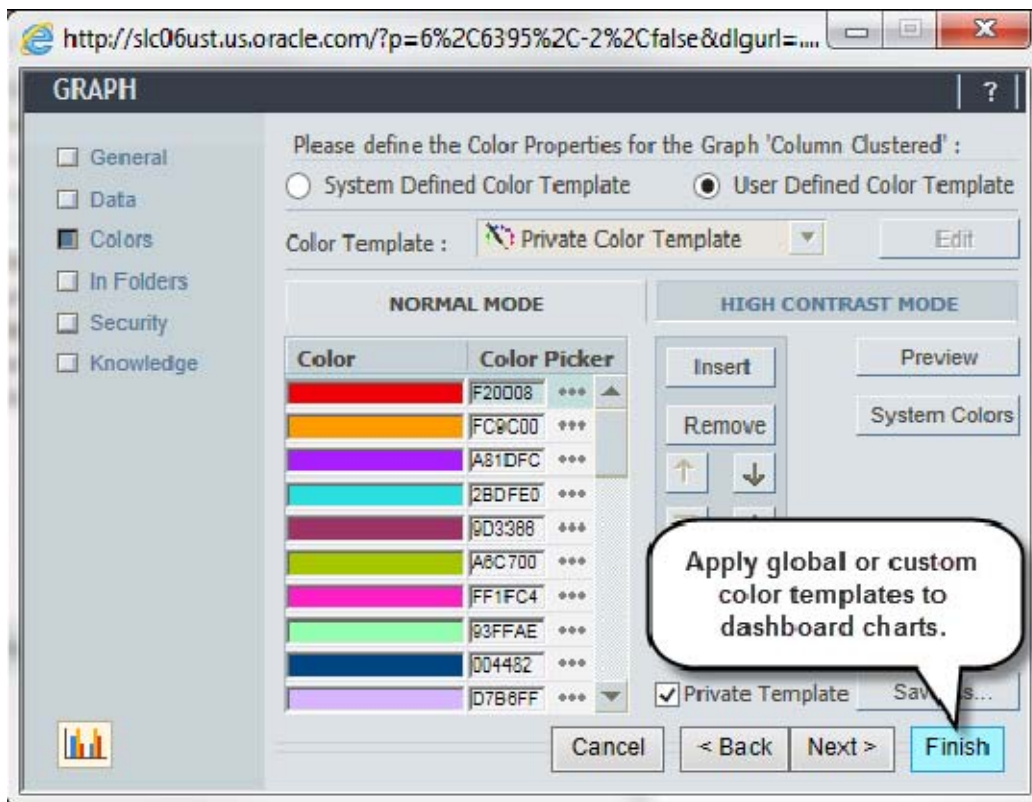
Other enhancements include features to simplify selection of graph type, data sources, and data ranges displayed in graphs.



To access this feature: Click the Dashboards tab on the home screen.

Global Color Templates

The Color Template wizard enables you to create custom color templates for use with graphs. Color templates help promote a uniform appearance across graphs throughout the application and in printed reports.



To access this feature: On the Dashboards tab, click Edit Tab on the Dashboard menu.

Usability

New usability features in Primavera Portfolio Management 15.1 include:

- Advanced search
- Exporting a scorecard as a Word document

Advanced Search Enhancements

Advanced Search is available in Primavera Portfolio Management 15.1, enabling complex, query-based searching for items and portfolios. For scorecards, the advanced search returns only portfolios; for workbooks, forms, and dashboards, the search returns both portfolios and sub-items. Search results can be filtered by name.

The screenshot shows a web browser window with the URL <http://slc06ust.us.oracle.com/?queryStr=4007%u2004Cat%201%20Adv%20Search%u2004...>. The main window is titled "Advanced Search" and contains the following elements:

Category	Operator	Value	AND/OR
Cat 1 Adv Search	Equals	100	OR
Category 2 Adv Search	Contains	advanced	
Select a Category			

On the right side of the table, there are controls: up and down arrows, a "Remove" button, and a "Reset" button.

Below the table, there is a "Filter by name" field with the text "item" and a "Search" button.

The "Search Results" section shows two items:

- Item 1 Adv Search
- Item 2 Adv Search

A callout bubble points to the search results area with the text: "Advanced Search enables you to build category-based queries against OPPM data."

A "Close" button is located at the bottom right of the window.

To access this feature: Click the Advanced Search icon  next to the central drop-down at the top of the screen.

Exporting a Scorecard as a Word Document

Primavera Portfolio Management 15.1 enables you to export a scorecard directly to MS Word. The scorecard is exported as a table with all formatting and color indicators preserved for inclusion in presentations and other printed documents.

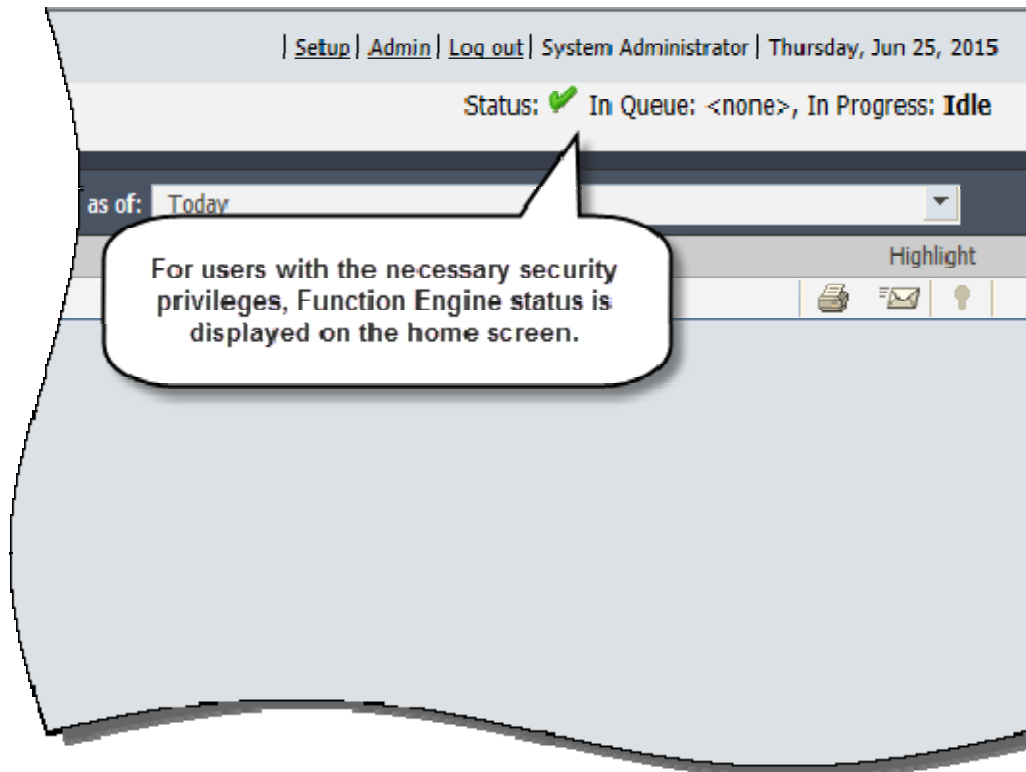
Scorecard Export (Scorecard) / Scorecard Export (Portfolio) / Today (Data as of: Jun 25, 2015)
Scorecard Report, printed by: System Administrator, Jun 25, 2015

	Items	Category Trend	Category Trend 1	Category Trend 2	FL Cat 2	FL Cat1
	ScorecardExport	-	-	-	-	-
1	Gandalf Manufact...	12	222	123	11	1,231
2	security test	12,343	55	111	444	777
3	test opportunity (t...	12,333	33	222	666	777
4	Unifiertest1 (Unifi...	12,444	12,222	333	555	5,544

To access this feature: On the Scorecard tab, click Export on the Scorecard menu.

Function Engine Status on the Home Screen

View the status of the Function Engine, including the number of pending function engine actions, in real time on the home screen. This feature helps administrators and other users troubleshoot function engine operations without having to access the Admin screen.



To access this feature: For enabled users, Function Engine status is displayed throughout the application.

Additional Usability Enhancements

Automatic Renaming of Duplicate Entities: An new option on the Defaults tab on the Admin screen enables the automatic renaming of duplicate entities -- portfolios, maps, scorecards, forms, dashboards, etc. -- when they are created. Auto-renaming applies to all application modules for items created both manually or in a form. If the feature is not enabled, users still receive a prompt to rename the new entity or overwrite the original.

Automated Item Publication: The Alert wizard can be used to configure the application to publish new items to a specific server when alerts are triggered.

Additional Enhancements

Additional enhancements in Primavera Portfolio Management 15.1:

Workflow

- Pagination of the workflow pane for better performance and usability.
- In Update Category workflow steps, set a workflow task to update the value of one category with the value of another category as of a specified data date.
- Workflow Editor now warns users of conditions that may cause circular loops.

Advanced Function Editor

- getItemName: Returns name of item or portfolio that the function runs against.
- getSubItemParent: Returns category value of item or portfolio that contains the sub-item that the function runs against.
- getHomePortfolio: Returns category value of home portfolio that contains the item that the function runs against.

Integration: OPPM Bridge supports data exchange between summary tasks in MS Project and sub-items in Portfolio Management, providing the ability to establish a sub-item mapping mode with the MSP server that provides parity with the P6 server. It also provides the ability to synch only changed data from MS Project. Also, in the P6 Bridge utility, projects are now displayed hierarchically, as they are in the P6 EPS node structure.

Screen Resolution: Display width resolutions of 1366, 1680, and 1920 are added to the previously available 1025 and 800.

Finnish and Swedish Support: Dates, currencies, and quantities can be set to follow Finnish and Swedish formatting standards.