



## P6 to Visio Loader

Emerald's P6 to Visio Loader takes the time, pain and frustration out of creating summary schedules for management.

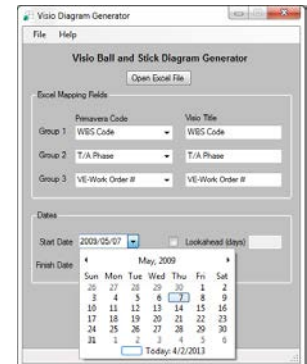
### THE CHALLENGE

Many companies use graphical reports created in Microsoft Visio to produce high-level overviews of detailed project information. These Visio charts are laborious to create and tedious to update; due to their time consuming nature, information presented is commonly outdated by the time a chart is published. Because project schedule data is managed in P6, duplicate work is required to draw the Visio diagram from the schedule data.

### THE SOLUTION

Emerald's P6 to Visio Loader is a diagram reporting tool that takes the time, pain and frustration out of the process and makes the act of updating quick and easy. To create a Visio chart, the steps are simple:

1. Export the data from your P6 schedule using an excel export template.
2. Open the P6 to Visio Loader and select the Excel file to generate the content of the diagram.

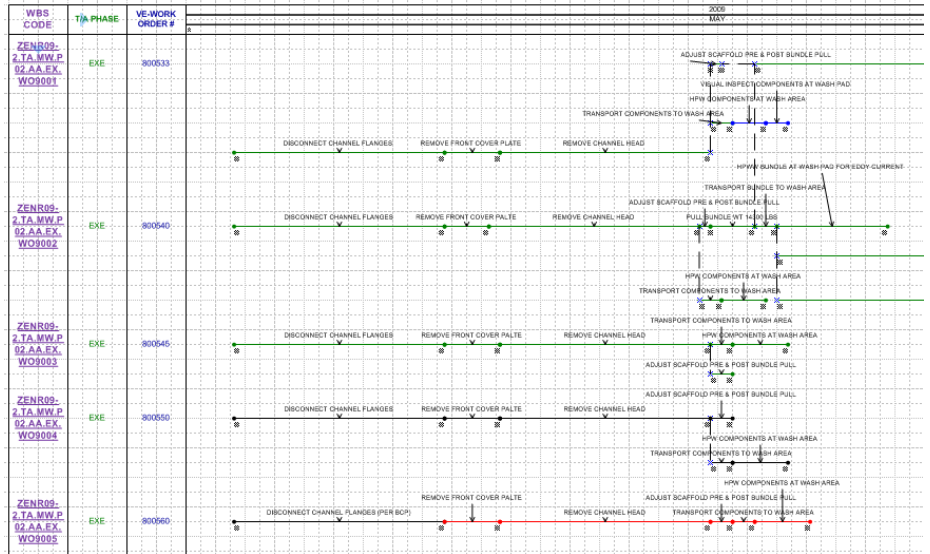


3. Define the grouping levels for the diagram, select a date range and adjust the settings to customize the Visio diagram appearance as required.



4. Generate the chart.

The final result is a customizable, one-page, printable diagram of your schedule that provides a high level overview in an easy to read format. The Visio objects will appear on separate layers as defined in the settings and the colors, line styles and font styles can also be customized from the program settings. Once in Visio, the elements can be modified or annotated as desired by the users.



**THE BENEFIT**

With Emerald's P6 to Visio Loader tool, your scheduling team will spend more time analyzing data instead of generating reports in Visio. Moreover, managers and stakeholders will get more accurate and timely reports.

**PRODUCT HIGHLIGHTS**

With Emerald's P6 to Visio Loader, the benefits include:

- Select data for reports from one data source
- Avoid work duplication
- Create summary management reports
- Fewer P6 reports and layouts required
- Avoid double entry errors
- Save time through fast report creation
- 3 grouping levels for displaying activities
- Activities can be summarized (grouped) based on activity codes or WBS
- Customizable layouts – have more control over the look and feel
- Customizable colors and layers for activities based on activity type