

*Automate schedule quality assurance
and business process adherence
directly in Primavera P6.*



P6-QA v8 – Schedule and Project Validation

THE CHALLENGE

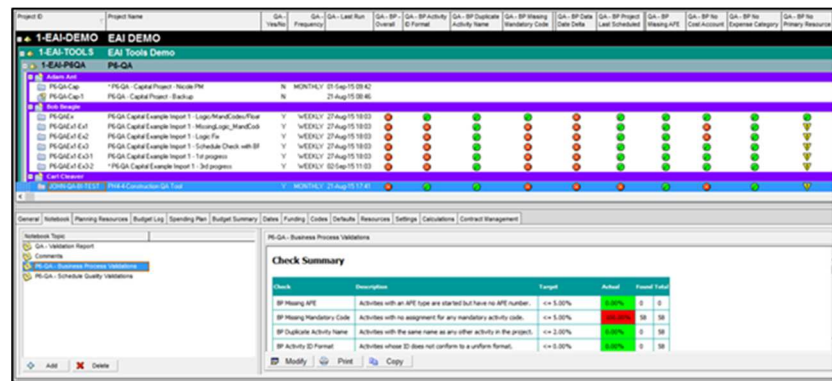
When managing a large portfolio of projects with stakeholders and project contributors around the world, it can be a challenge to make sure that schedules and business processes are done consistently for accurate portfolio management and reporting. A quality schedule is an essential communication and management vehicle to drive project performance and success.

Project controls teams develop detailed business processes and quality specifications in all of their projects, but the ability to measure these qualitative statements is not easy and can be very time consuming and expensive, particularly if third party consultants are needed. Business process adherence is also an area that can be hard to measure quickly and objectively.

When P6 users in an organization come from a wide range of backgrounds and varying skill levels, it is important to have tools that allow for real-time self-assessment and proactive improvement. The ability to identify and correct deficiencies in schedules and business processes during all project phases is vital for project success.

THE SOLUTION

Emerald's P6-QA tool automates schedule quality checks and business process adherence that can be customized to each project or standardized by project type, department, or region. It also empowers your scheduling team members with real-time adherence feedback directly in P6 (client or web) eliminating costly, time-consuming schedule quality reviews. Because the P6-QA tool is embedded into P6, users can self-critique and improve their skills without waiting for feedback from their managers.



Validation flags and reports are available within the application, allowing for easy user-driven reporting. Because there is a validation tool built in to Primavera P6, there is no need to export a copy of the P6 schedule file to run an analysis. The P6-QA tool can be set to run at a preset interval to analyze schedules and processes or to run on an as-needed frequency to ensure ongoing analysis and user-driven improvements.



CONTACT US

hq 403.686.7100

toll free 1.877.316.6005

emerald@emerald-associates.com

www.emerald-associates.com

THE BENEFITS

- Get a unique high level view with program and portfolio level analysis and reporting
- Get visual indicators directly in P6 to help identify and address errors quickly & consistently
- Improve the quality of your project portfolio
- Ensure schedule reliability
- Reduce reliance on third party consultants
- Streamline learning and enhance the skills of your project team
- Simple graphical indicators that effectively convey information about scheduling, and are useful for filtering and sorting for additional flexibility when building personal monitoring criteria or layouts in P6

EASY, FLEXIBLE & SECURE

- Seamlessly integrates directly in Primavera P6
- Enables you to customize your analysis to fit your organization's needs
- Intuitive user interface

SAVES TIME

- Automatically identifies deficiencies in Primavera P6
- Regularly runs checks and self-evaluations to improve output

SAVES MONEY

- Reduces reliance on expensive outside third party consultants for review
- Improves reporting accuracy and timeliness
- Uses snapshots to build reports and graphs unavailable in P6

USER COMMENTS

"Now I do not need to ask my lead every time for help when I get a contractor's schedule."

WHAT'S NEW – V8

- New UDFs to show variances and calculated values - P6-QA may report that you have activities that are overdue for updating, but are they over by 2 days or 2 months? And what is your project's critical path length index (CPLI) exactly? Now you can view these metrics right in P6 to know how close they are to your target values.
- Indicators for resource assignments - P6-QA has reported you have resource assignments that are missing roles, actuals or perhaps are over budget. In this release, we've added indicator UDFs. P6-QA populates them to let you find the affected resource assignment with ease.
- P6-Reporter Ready - We've added custom tables to our P6-Reporter tool that neatly arrange your P6-QA data, so it's ready to be put into the reporting software of your choice.
- P6-QA statistics can now be pushed into time-based graphics.

TECHNICAL REQUIREMENTS

- 1 GB of RAM
 - 500 MB of disk space
 - Windows 2003 or newer or Linux
-