

PCM-Loader

THE CHALLENGE

Oracle Primavera Contract Management® (PCM) is the tool of choice for collaborative contract, cost, and document management and is used by global teams managing large, complex projects, juggling numerous projects, or working in remote locations with contractors of all sizes.

With such diversity, it is virtually impossible to get team members access to a fully integrated toolkit and appropriate training to collaborate across all project groups. Furthermore, with large numbers of complex documents, such as project budgets, Authorizations for Expenditures (AFEs), commitment contracts, trends, and drawing logs, ensuring documents are entered quickly and accurately can be particularly challenging.

THE SOLUTION

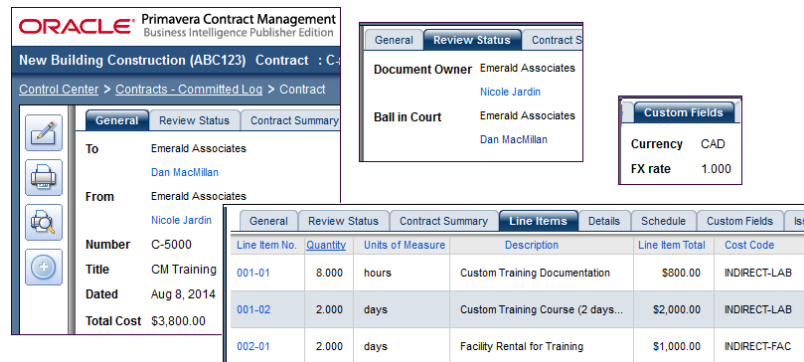
Emerald's PCM-Loader is a secure, web-based, user-friendly solution that creates and updates PCM documents from easy-to-use Excel template files.

The Excel templates can be customized to your organization's formats and can include custom fields as well as cost code distributions and all editable fields in the PCM module.

	A	B	C	D	E	F	G	H	
1		Project Number:	ABC123						
2		Contract Number:	C-5000						
3		Contract Title:	CM Training						
4		Contract Date:	August 8, 2014						
5		Document Owner:	EAI	NJ					
6		FROM:	EAI	NJ					
7		TO:	EAI	DM					
8		Currency:	CAD						
9		Exchange Rate:	1.00						
10		Use Approval Process:		Y					
11									
12									
13		Item No.	Description	UoM	Quantity	Unit Price	Value	Cost Code	Item Type
14		001-01	Custom Training Documentation	hours	8.0	\$100.00	\$800.00	INDIRECT-LAB	Unit Price
15		001-02	Custom Training Course (2 days)	days	2.0	\$1,000.00	\$2,000.00	INDIRECT-LAB	Unit Price
16		002-01	Facility Rental for Training	days	2.0	\$500.00	\$1,000.00	INDIRECT-FAC	Unit Price

Excel contract template example

Whether data is being migrated into PCM part way through a project, is exported from another software tool to integrate into PCM on a regular basis, or is entered directly into an Excel data entry sheet to simplify a task for a casual or disconnected user, it can all be securely uploaded into PCM using the PCM-Loader.



The screenshot displays the Oracle Primavera Contract Management Business Intelligence Publisher Edition interface. The main window shows contract details for 'New Building Construction (ABC123) Contract : C-5000'. The 'General' tab is active, showing 'To: Emerald Associates, Dan MacMillan' and 'From: Emerald Associates, Nicole Jardin'. A 'Document Owner' pop-up window lists 'Emerald Associates, Nicole Jardin, Dan MacMillan'. A 'Custom Fields' pop-up window shows 'Currency: CAD' and 'FX rate: 1.000'. A table at the bottom lists line items:

Line Item No.	Quantity	Units of Measure	Description	Line Item Total	Cost Code
001-01	8.000	hours	Custom Training Documentation	\$800.00	INDIRECT-LAB
001-02	2.000	days	Custom Training Course (2 days...)	\$2,000.00	INDIRECT-LAB
002-01	2.000	days	Facility Rental for Training	\$1,000.00	INDIRECT-FAC

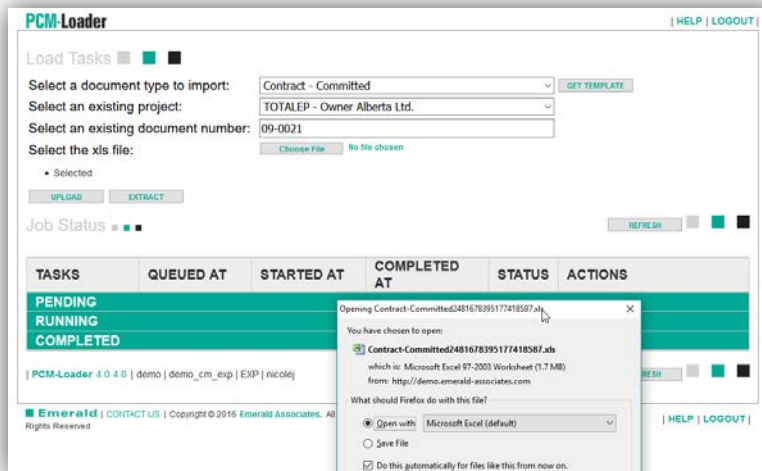
Contract loaded into PCM

TECHNICAL SPECS

- Primavera Contact Management 11 or higher
- Client: IE / Firefox / Chrome
- Suggested Application Servers: Tomcat, Jetty, or Weblogic
- JVM: JDK 8

MODULES

PCM-Loader can upload data into multiple projects and multiple documents in one upload file. The tool can access all the cost documents including the cost worksheet, the procurement items including the estimates and the bids, the contracts modules including budgets and commitments as well as the custom module. Change proposals and payment requisitions are also accessible for scope change management and quick progressing, as are the trends which are typically used for forecasting. Non-cost documents are also readily available including the RFIs, site instructions, materials deliveries, issues and submittals.



THE BENEFIT

Implementing Emerald’s PCM-Loader streamlines data entry, reduces time and effort spent in multiple systems reconciling data errors, and ensures business rules and consistent processes are enforced.

With today’s fast-paced projects and real-time collaboration, accurate and consistent reporting is key to effective decision making and a real competitive advantage.

PRODUCT HIGHLIGHTS

User-Friendly

- Web-based solution with a user-friendly interface
- Customizable and intuitive format for data entry in Excel
- Uses PCM API so security is respected without support issues
- Enforces business rules

Saves Time

- Mass load multiple documents from one spreadsheet
- Streamline data entry and eliminate duplicate data entry

Saves Money

- Reduce training costs for casual and disconnected users
- Build simple “manual” integrations from other systems

Implementation
Automation
Integration
Training
Risk Analysis
Dashboards
Turnaround Assistance
Engineered Hardware

Experts in all things
ORACLE PRIMAVERA