

# Primavera® Contractor

## The easy-to-use, affordable way to manage your projects

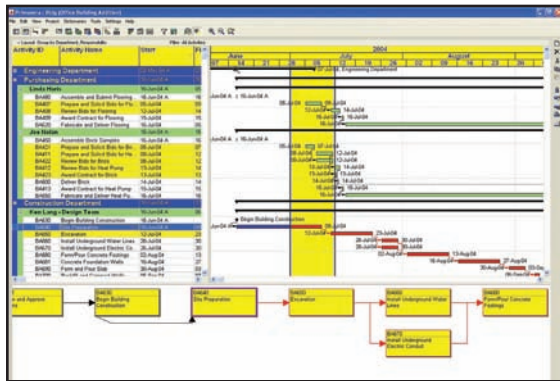
Primavera Contractor was built to get you planning and scheduling immediately—right out of the box. With easy and intuitive navigation, you will begin planning and controlling your project faster than you ever thought possible ensuring that you get paid on time. Online help answers your questions instantly, plus you get 90 days of FREE telephone support from our world-class customer support organization.

### Plan and Schedule Projects Quickly and Easily

Add activities quickly and easily, drag and drop activity bars to add constraints or modify your plan, and still take full advantage of Critical Path Scheduling. Interactive, flexible PERT and Gantt charts make it simple for general contractors to communicate with the client as well as other designers and contractors. Project KickStart™ Wizard provides a library of options to help you think through project phases, plan resources, and enable you to participate and plan for obstacles that might impede progress. With Primavera Contractor, planning the work and managing changes is quick and easy.

### Communicate Status

The Send Project feature enables contractors to e-mail schedules in one simple step to be fully incorporated into the general contractor's project master schedule. Primavera Contractor can also be used to create the master schedule itself. Easily integrate and approve contractor schedules and quickly import and export Microsoft Project® and Microsoft Excel® data, Primavera Contractor project plans, as well as other industry-standard Primavera software data. With the flexible scheduling power of Primavera Contractor, it simply doesn't get any easier to synchronize your projects.



Manage the critical path to finish a project on time while maintaining a handle on the budget and costs.

### Improve Productivity and Coordination

With the new Progress Spotlight, you can look ahead as you plan for the upcoming day, week, or month. By planning activities and linking them to resources, you have everything you need to get the job done. Easily coordinate labor, material, equipment, and subcontractors to ensure on-schedule, on-budget completion. The new Baseline Maintenance tool manages change and automatically adjusts schedules as necessary. With Primavera Contractor, you'll always know what you have completed and what will happen next, for quick and easy communication.

Office Building Addition  
Report Date 03-Sep-04 10:39  
Project Start 03-May-04  
Project Finish 15-Mar-05  
Data Date 20-Jun-04

### SR-01 Classic Schedule Report - Sorted by ES, TF

Activity ID	Orig	Rev	%	Dept	Activity Name	Early Start	Early Finish	Late Start	Late Finish	Total Float
BA430	23	0	100%	ENG	Design Building Addition					
BA431	9	0	100%	ENG	Review and Approve Design					
BA440	18	9	50%	CON	Site Preparation					
BA435	10	2	80%	ENG	Review and Approve Brick Stack					
BA436	10	2	80%	ENG	Review and Approve Flooring					
BA445	0	0	100%	POH	Assemble Brick Samples					
BA448	3	0	100%	ENG	Assemble Technical Data for Heat Pump					
BA449	0	0	100%	POH	Assemble and Submit Flooring					
BA430	0	0	100%	CON	Begin Building Construction					
BA470	10	8	80%	ENG	Review Technical Data on Treat					
BA421	3	3	0%	POH	Prepare and Submit Bids for Brick					
BA427	5	5	0%	POH	Prepare and Submit Bids for Floor					
BA411	3	3	0%	POH	Prepare and Submit Bids for Heat					
BA422	3	3	0%	POH	Review Bids for Brick					
BA428	3	3	0%	POH	Review Bids for Flooring					
BA412	2	2	0%	POH	Review Bids for Heat Pump					
BA423	1	1	0%	POH	Award Contract for Brick					

### Project Differences Report

Comparing Office Building Addition to Office Building Addition - B1  
Generated by admin  
Date Fri Sep 03 16:02:09 EDT 2004

Field Name	Office Building Addition [1] B1 [1]	Office Building Addition - B1 [1] B1 [1]
Date Date	20040903 12:00	20040903 12:00

Activity ID	Activity Name	New Free Float	Old Free Float
BA750	Concrete Second Floor	576.0	1040.0
BA751	Foundation Phase Complete	1280.0	1280.0
BA752	Close on Phase Begin	560.0	564.0
BA485	Assemble Technical Data for Heat Pump	0.0	0.0
BA480	Driver Brick	360.0	360.0
BA753	Begin Structural Phase	1120.0	1120.0
BA420	Estimate and Deliver Flooring	660.0	660.0
BA421	Review and Approve Design	Value not specified in the database	0.0

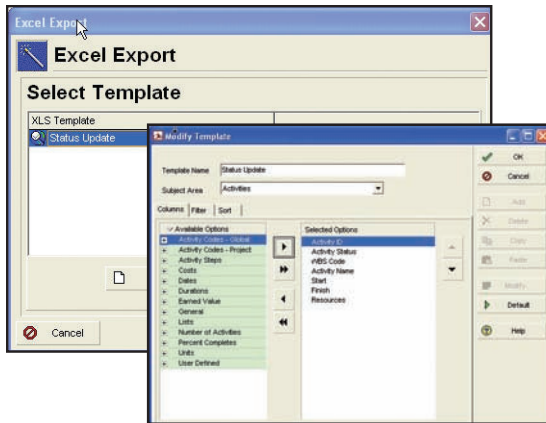
Industry-standard reports with Claim Digger functionality let you analyze project progress.

### Maintain Control

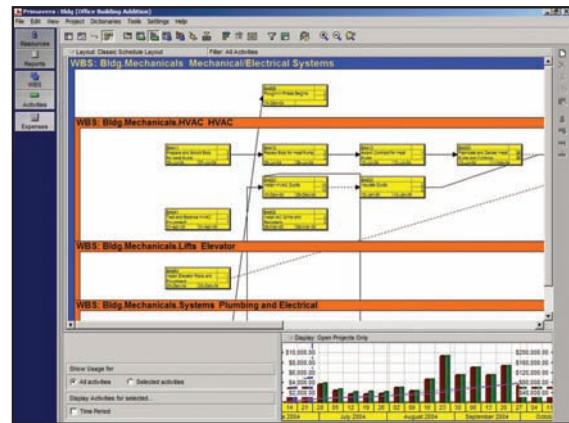
Primavera Contractor allows you to clearly define team accountabilities by assigning activities to each contractor. Compare your time-based budget to actual costs and work performed while maintaining independent estimates of cost to complete. Baselines let you keep track of “what happened” and “what changed” every step of the way. Create unlimited “what-if?” scenarios to explore alternatives. Best of all, Primavera Contractor automatically compares schedules from one month to the next with its unique Claim Digger™ technology.



# Key Features



Simple import and export makes communication easy.



Primavera Contractor provides the best graphic representation of the status and organization of your project.

## Project Planning

- Plan projects fast with project templates
- Project KickStart™ Wizard builds schedules right away
- Manage multiple projects
- Assign unlimited hierarchical activity codes
- Organize with true Work Breakdown Structure support

## Scheduling and Project Analysis

- Critical Path Scheduling of projects with up to 2,000 activities
- Control budgets, changes, and estimates at completion
- Manually or automatically update progress on activities
- Analyze schedule changes with unique Claim Digger technology
- Progress Spotlight identifies next month's tasks and effectively manages changes in project scope with Baseline Maintenance

## Schedule Coordination

- E-mail entire projects with simple Send Project feature
- Automate schedule integration with import/export wizard
- Exchange data seamlessly with all Primavera scheduling products and Primavera Contract Manager (formerly Expedition®)
- Import and export Microsoft Project® schedules
- Import and export project and resource updates
- Combine schedule data from Microsoft Excel® using import/export

## Hardware Requirements

- 128MB RAM required (256MB recommended)
- 500MB minimum storage required
- Full printer and plotter support

## Graphics and Reporting

- Create attractive and fully customizable Gantt charts
- Identify driving relationships using PERT diagrams with Trace Logic
- Customize more than 150 industry-standard construction reports
- Save time with easy-to-use report wizard
- Insert photos, drawings, and text in any graphic
- Easy-to-use features enable contractors to undo tasks, combine schedule data, and transfer information.

## Resource and Cost Management

- Code unlimited assignments and resources
- Allocate resources to activities using distribution curves
- Compare baseline budget to actual units and costs
- Forecast cost at completion based on percent complete
- Track regular hours, overtime, and shift differentials for accurate forecasting

## Two Versions

- **Standard** – simplifies schedules for projects up to 750 activities
- **Deluxe** – handles scheduling more complex projects up to 2,000 activities

### WORLDWIDE HEADQUARTERS

Three Bala Plaza West,  
Bala Cynwyd, PA 19004, USA  
Phone: +1.610.667.8600, 1.800.423.0245  
Fax: +1.610.667.7894  
info@primavera.com

### INTERNATIONAL HEADQUARTERS

3rd Floor, Metro Building, 1 Butterwick  
London W6 8DL, United Kingdom  
Phone: +44.20.8563.5500  
Fax: +44.20.8563.5533  
intlinfo@primavera.com



www.primavera.com